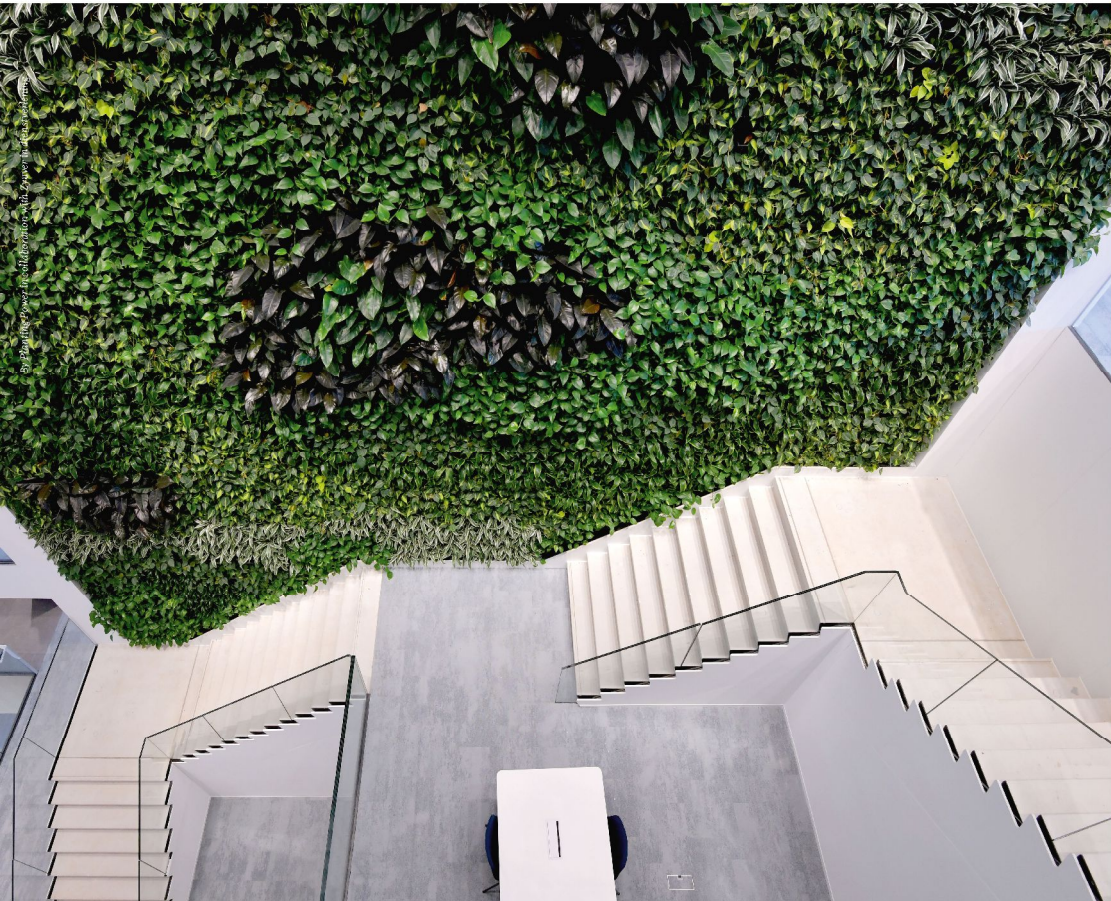


NextGen | Living Walls





NextGen | Living Walls

UNLEASHING THE POWER OF GREEN DESIGN WITH NEXTGEN LIVING WALLS

In a world increasingly dominated by concrete and steel, there is a growing desire to be surrounded by nature. NextGen Living Walls, a groundbreaking living wall system from Architectural Supplements and its subsidiary, Nature's Green, offers an innovative solution to incorporate lush greenery into your architectural designs.

By collaborating with our global network of NextGen Experts, we help our clients transform their spaces into biophilic masterpieces.

Welcome to a greener future with NextGen Living Walls.

Covershot by Green Magic OÜ



CONTENTS

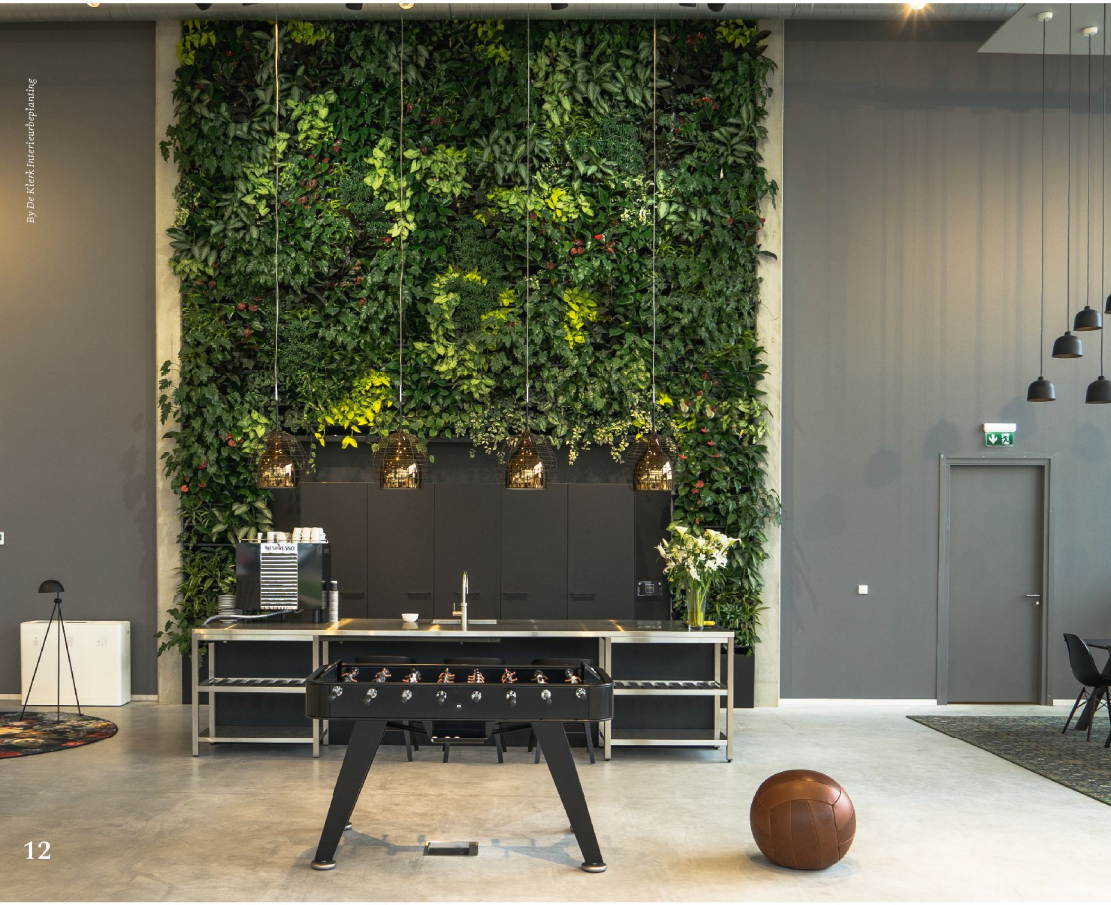
Expertise & Collaboration	13
Hydroculture	14
Soil Culture	15
Instant Impact	17
Let's Go Outside	19
Global Green Team	21
Easy Care	27
Mobile Green	29
Support & Innovation Done Right	30
Specifications	32-33









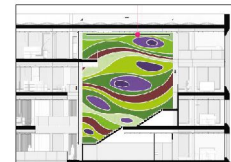
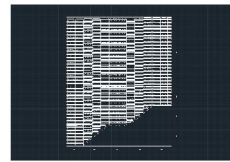




By Peter Blumens GmbH

EXPERTISE & COLLABORATION

Our highly trained team specializes in creating sustainable living walls that are both visually stunning and environmentally beneficial. We assess the feasibility of your project, collaborate with stakeholders, and provide comprehensive technical support from start to finish. We bring your vision of a vibrant and sustainable living wall to life and focus on long-term success. Let us be your trusted partner in this transformative process.



By Planting Power in collaboration with Zeynep Akdemir



HYDROCULTURE*

NextGen Living Walls are suitable for soil or hydroculture plants, providing several benefits when utilizing hydroculture:

- 1) **Nutrient Control:** With nutrients being dissolved directly in the water, hydroculture allows for precise control over the timing and delivery of nutrients, leading to healthier plants and fewer replacements.
- 2) **No Soil-Borne Diseases:** The lack of soil in hydroculture systems means that plants are less likely to encounter soil-borne diseases and pests. This reduces the dependency on pesticides, making it an eco-friendlier option.
- 3) **Cleaner Environment:** Hydroculture offers a cleaner alternative to soil gardening. Without dirt, it is particularly well-suited for indoor settings where cleanliness is a priority.
- 4) **Longer Watering Cycles:** Hydroculture plants need to be watered less frequently, lowering maintenance costs.

* Not available for the North American Market.



SOIL CULTURE

NextGen Living Walls are designed to hold plants in their original grow pots, providing several benefits when utilizing soil culture:

- 1) **Versatility:** Our trays offer different sizes that accommodate 12, 14 or, 20 cm (4", 6", and 8") pots.
- 2) **Easy Install & Replacements:** Since the plants remain in their original grow pots, the installation process is quick. Likewise replacing plants or switching out seasonal blooming plants is fast and straightforward. Pull out one plant and replace it with another.
- 3) **Diversity:** A wider variety of plant species are available with soil, allowing for greater customization.
- 4) **Cost-effectiveness:** You do not need to pre-grow plants for the NextGen System, eliminating long lead times and expensive single-source supply.





By Sheet Interiors/planting

INSTANT IMPACT

NextGen Living Walls are lush and full on day one. Because NextGen uses a grid and tray system, plants remain in their original grow pots. There is no need to pre-grow plants in a substrate or to let the wall "grow in" after install. Need to replace a section of the wall or refresh the design? Simply swap plants. With its modular and scalable design, NextGen Living Walls create a healthy, relaxing atmosphere from day one.



STEP 1: Grids



STEP 2: Trays



STEP 3: add plants

By Bounteous





By Green Design



By Plantation P.



By Jaap Sterk Exteriors



By Green

LET'S GO OUTSIDE

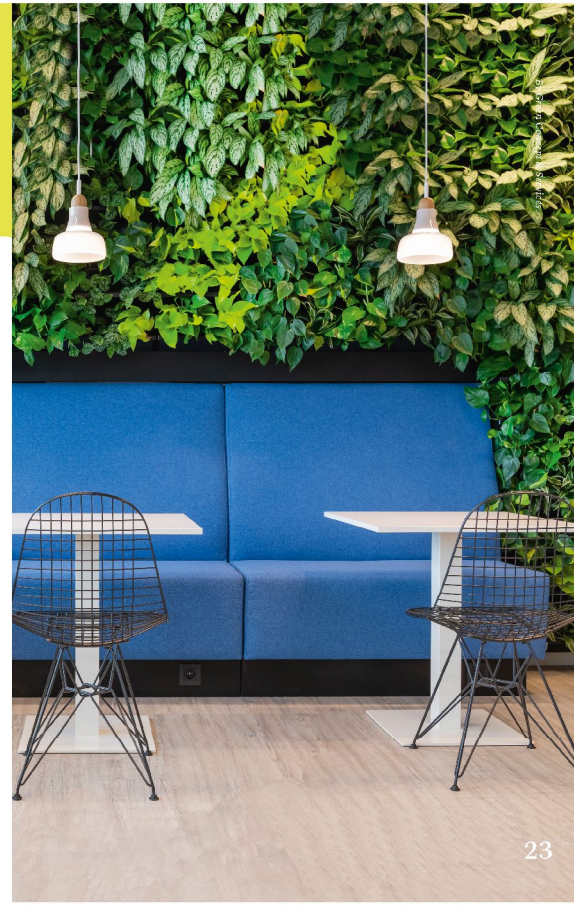
NextGen Living Walls can be used in exterior applications as well. When placed outside they offer a multitude of benefits that extend beyond their aesthetic appeal. These lush vertical outdoor gardens help reduce the heat island effect, act as a carbon sink, provide for biodiversity, and have a calming effect on people, which in turn improves health and well-being. The NextGen Living Walls system is modular and scalable, allowing you to create an outdoor green oasis.

Appropriate for any climate; recommended as a seasonal living wall in northern climates.



GLOBAL GREEN TEAM

We take pride in creating eye-catching green spaces everywhere, every day. With our global network of NextGen Experts, we can often connect you with multiple companies that are eager to maintain your living wall. These companies have completed the certified NextGen program to install and maintain NextGen Living Walls. Whether it's a commercial, public, or residential project, we are all passionate about creating living works of art. Together we aim to create a healthier, happier, and more sustainable planet.









By Hydroseng Interieurbeplanting



EASY CARE

We have one of the most water-efficient systems available, only requiring service every 3 to 4 weeks, which reduces maintenance costs. Additionally, our system boasts one of the lowest plant replacement rates in the industry. Our walls do require care, however. This is where our certified NextGen experts come in. They have received extensive training on how to install and maintain the NextGen Living Wall, and we take pride in having the largest network of certified experts in the industry. This serves as a testament to our commitment to quality and our global reach.

The combination of water efficiency, low maintenance, and a robust partner network makes the NextGen Living Walls system a leading choice.



By Aquaplant GmbH



MOBILE GREEN

Want to incorporate living walls into a space where a full wall may not be feasible or where your clients' needs are constantly changing? NextGen Room Dividers provide flexible space planning with the benefits of live plants. Boasting the industry's leading distributed water capacity, the NextGen Room Divider system has no need for pumps or water reservoirs—enjoy lush greenery that extends the full height of the divider. No need to use wifi, ensure outlet access, or service damage-prone moving parts. Simply place it where you need it. Available in single or double-sided variants, NextGen Room Dividers deliver an instant biophilic impact wherever your clients need it most.



ONE-SIDED



TWO-SIDED

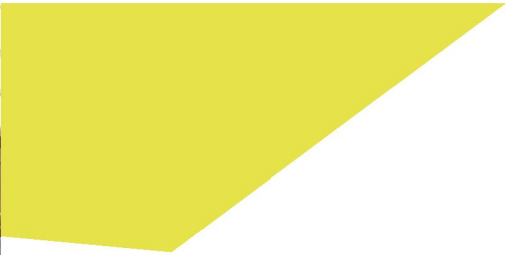


Item	Description	Length x Height x Depth		Weight		Parts per NextGen Room Divider	
		CM	IN	KG	LBS	Hydro	Soil
NGRDS 1S	Small Room Divider one sided	55 x 175 x 57	21.7 x 68.9 x 22.4	34.6	76.3	24	24
NGRDS 2S	Small Room Divider two sided	55 x 175 x 57	21.7 x 68.9 x 22.4	45.3	99.9	48	48
NGRD 1S	Room Divider one sided	104 x 175 x 57	40.9 x 68.9 x 22.4	54	119.1	48	40
NGRD 2S	Room Divider two sided	104 x 175 x 57	40.9 x 68.9 x 22.4	74	163.1	96	80

Unit comprised of metal stand, 4 wheels, top- and base cover, grids, trays, drain hoses and leaf screens. Available in black matte and glossy white. Multiple finishes available in USA and Canada.



By Peter Dore, Farnsworth & O'Connell Architects, Inc.



SUPPORT & INNOVATION DONE RIGHT

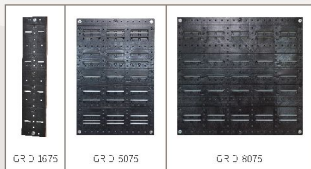
We are only successful, when every NextGen Living Wall is successful. For this reason, we provide online and remote support throughout the project's lifecycle. From spec to maintenance, from phone calls to webinars, we are here to answer your every question. Have a space with difficult geometry? We can provide shop drawings, design the necessary irrigation system by drawing on our extensive portfolio of projects to tackle any curve, corner or column. Still looking for something more? We can provide on-site project supervision services. No matter the issue you will find that we are constantly collaborating with our customers to push the limit of green wall design and improve our products.



By Farnsworth & O'Connell Architects, Inc.

NextGen Living Walls | STANDARD COMPONENTS

GRIDS



Item	Description	Length x Height Depth		Weight		Plants per tray		Water capacity when undrained		Estimated weight when drained and watered	
		CM	IN	KG	LBS	Hydro	Soil	Liters	Gallons	KG	LBS
GRD 1075	Grid for 120 1312 trays	16 x 75 x 2	6.2 x 29.5 x 0.8	0.8	0.9						
GRD 5075	Grid for 50 1210, 50 1312 and 75 1312 trays	50 x 75 x 2	19.7 x 29.5 x 0.8	1.75	3.9						
GRD 8075	Grid for 100 1312 and 100 1519 trays	80 x 75 x 2	31.5 x 29.5 x 0.8	2.8	6.2						

All Grids can be cut in different heights to achieve preferred height.

TRAYS FOR 13/12 SYSTEM



Item	Description	Length x Height Depth		Weight		Plants per tray		Water capacity when undrained		Estimated weight when drained and watered	
		CM	IN	KG	LBS	Hydro	Soil	Liters	Gallons	KG	LBS
120 1312	40 cm x 75 cm 13/12 or 14 cm (6") soil parts	20 x 17 x 20	7.9 x 6.7 x 7.9	0.4	0.9	1	1	0.75	0.2	2.1	4.6
50 1312	40 cm x 75 cm 13/12 or 14 cm (6") soil parts	50 x 17 x 20	19.7 x 6.7 x 7.9	0.9	2	3	3	2.7	0.71	6.25	13.8
75 1312	40 cm x 75 cm 13/12 or 14 cm (6") soil parts	75 x 17 x 20	29.5 x 6.7 x 7.9	1.3	2.8	4	4	4	1.05	9.37	20.7
100 1312	40 cm x 75 cm 13/12 or 14 cm (6") soil parts	100 x 17 x 20	39.4 x 6.7 x 7.9	1.8	4	6	5	5.4	1.43	12.5	27.6
TCR 1312	40 cm x 75 cm 13/12 or 14 cm (6") soil parts	19.5 x 17 x 20	7.6 x 6.7 x 7.9	1	2.2	3	3	1.6	0.42	5	11

NextGen Living Walls | STANDARD AND OPTIONAL COMPONENTS

TRAYS FOR 12/10 SYSTEM



Item	Description	Length x Height Depth		Weight		Plants per tray		Water capacity when undrained		Estimated weight when drained and watered	
		CM	IN	KG	LBS	Hydro	Soil	Liters	Gallons	KG	LBS
50 1210	40 cm x 12 x 10 cm (4") soil parts	50 x 13 x 15	19.7 x 5.1 x 5.9	0.8	1.8	1	1	3.4	1.6	0.42	5
50 1210 D											11

TRAYS FOR 15/19 SYSTEM



Item	Description	Length x Height Depth		Weight		Plants per tray		Water capacity when undrained		Estimated weight when drained and watered	
		CM	IN	KG	LBS	Hydro	Soil	Liters	Gallons	KG	LBS
100 1519	40 cm x 15 cm 15/19 or 20 cm (8") soil parts	100 x 17 x 20	39.4 x 6.7 x 10.2	2.5	5.5	5	4	7	1.85	15	33.1
100 1519 D											



Item	Description
BS 1312	Plant booster
PS 07	Plant straw 17 cm (7")
OC 100 1312	Outdoor cover for 100 1312 D trays
ED40/60	LED light 40 Watt 60 degrees beam angle in black or white
ED40/24	LED light 40 Watt 24 degrees beam angle in black or white
ED40/15	LED light 40 Watt 15 degrees beam angle in black or white
ED40/60 DM	LED light dimmable 40 Watt 60 degrees beam angle in white
S7 1880 and S7 18155	Screen bars glossy white in 80 and 155 cm length for 12/10 system
S7 2480 and S7 24155	Screen bars glossy white in 80 and 155 cm length for 13/12 system
S7 3080 and S7 30155	Screen bars glossy white in 80 and 155 cm length for 15/19 system
S3 1312	Screen bar for 13/12 system
S3 1519	Screen bar for 15/19 system



By Blaudick Tredehaus, INC.



Create & Inspire

THANK YOU

I want to extend a special thank you to those who provided the pictures for our brochure. Your exceptional talent and attention to detail have brought our brochure to life. Your combined efforts have resulted in a visually stunning brochure that will serve as an inspiration for years to come. Thank you for your hard work and unwavering dedication. Let us all make the world a healthier and happier place, one beautiful living wall at a time.

Best regards,
Jason Feinman
CEO

Blumen Otto GmbH

Cheliusstraße 15
Mannheim, 68167
Deutschland

P: 0621 - 33 10 99
E: info@otto-blumen.de

www.otto-blumen.de

